

“ For a long time we’ve known that Hintonburg, Mechanicsville, and Wellington Village needed better access to health services. Now, with the addition of this great new facility, Somerset West Community Health Centre will be able to deliver a wide range of health and social services. Like the Rosemount Public Library next door, we expect it will become a valued fixture of this community, accessible to everybody in the neighbourhood.”

SWCHC Chair Annie Hillis



“ It is with distinct pleasure that GT Express has worked with the wonderful community-minded members of Somerset West Community Health Centre. Their selfless enthusiasm focused entirely upon helping others serves as an inspiration to my entire staff. A project leader said to me after a successful campaign, ‘If you could only have seen the smiles on their faces showing feelings of pure joy for the gift they just received.’ I didn’t see the smiles but I felt the satisfaction knowing that the efforts of a few changed the lives of many. I look forward to continuing the relationship with the launch of their new branch.”

John Ferguson
GT Express on Wellington



“ This has been a major undertaking that has required years of planning and effort, as well as significant resources. Happily, our fundraising has been very successful to date, but we still need your help. I hope that you too will be a part of our success and support us in greatly increasing our capacity as your community health centre.”

SWCHC Executive Director
Jack McCarthy

30 Rosemount Capital Budget



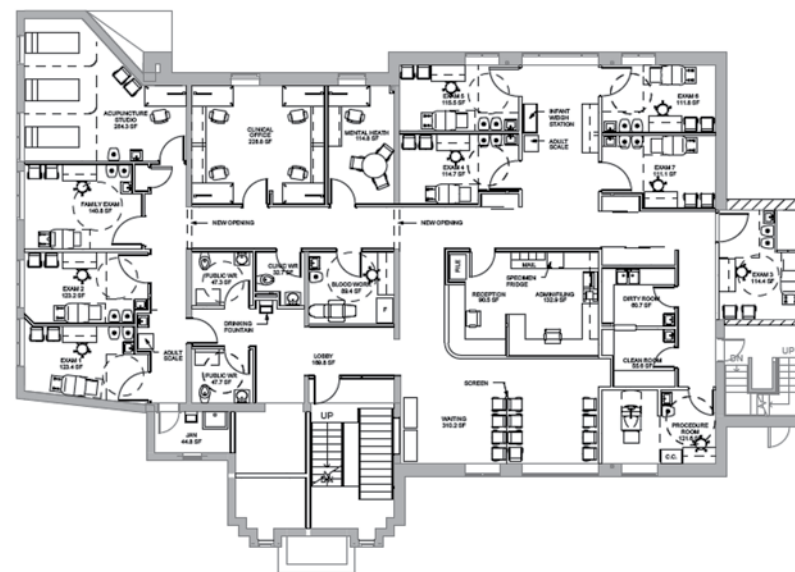
- 84% Infrastructure Ontario
- 9% Fundraising
- 4% City of Ottawa
- 3% Special Projects

The clinical floor of Rosemount has

- a nurse
- three physicians
- nurse practitioner lead Walk-In clinic every afternoon Monday to Friday

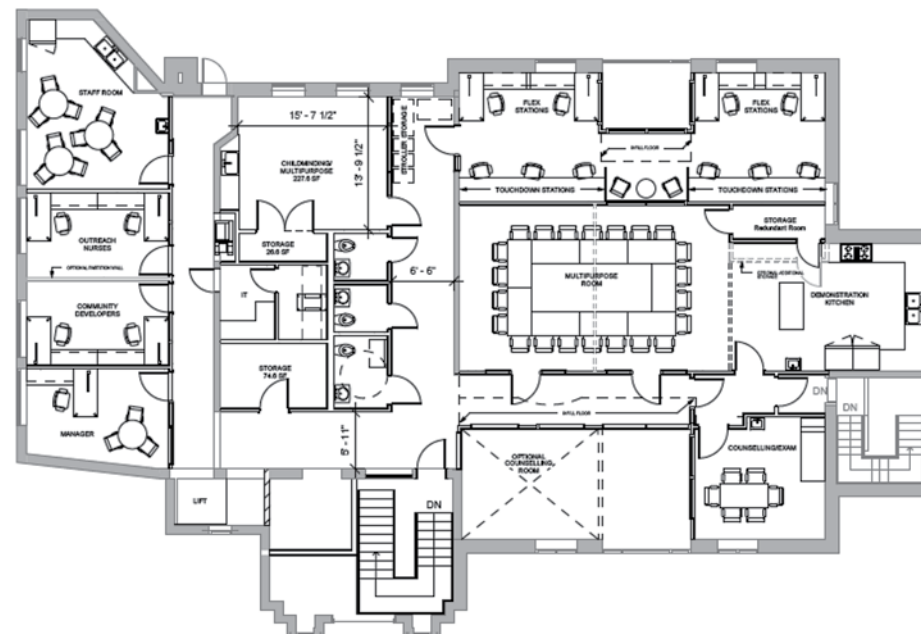
who will provide for the community's healthcare needs using

- seven exam rooms
- a large family exam room
- a counselling room
- a procedure room.



The upper level of Rosemount will be a true community-building space featuring

- a large, purpose-built demonstration kitchen to host our nutrition programs for community groups
- a dividable multi-purpose room to provide a meeting place for neighbourhood activities
- a warm childcare space to be used for children and youth activities as well as childcare for groups.



For more information on SWCHC and this exciting community fundraising opportunity please contact Rosemary Jones at 613-238-8210 ext. 2312.



Rosemount Branch Capital Fundraising Campaign

Building a Healthy Community

Together!

Let's Grow *Together!*

SWCHC Eccles Branch

55 Eccles Street, Ottawa, ON K1Y 6S3
Main Reception: 613-238-8210
Main Fax: 613-238-7595
Medical Reception: 613-238-1220
Medical Fax: 613-235-2982
E-mail: info@swchc.on.ca

SWCHC Rosemount Branch

30 Rosemount Avenue
Ottawa, ON K1Y 3H7



Ontario's Community
Health Centres
Every One Matters.



Ontario's Community
Health Centres
Every One Matters.



Grow *With Us!*

Building a Healthy Community Together.

Community health in the heart of the neighbourhood...

Opening our new branch in Hintonburg will place community health in the heart of a neighbourhood underserved by our original location. Equally important, it will give residents in the western part of our catchment a community gathering place for health that is truly their own.

Why are we expanding?

- We know that the demand for our services is increasing as the community grows in Hintonburg, Mechanicsville, Champlain Park and Wellington West
- We heard through extensive community consultation that there was strong support for the expansion of services
- Our ability to serve more clients increases with our expanded space
- We're adding community space for exciting new programming opportunities like community kitchens, youth groups, community meeting space and so much more...

What our new branch will mean for you

- Increased access to family health care and social services closer to home
- Added community meeting space



SWCHC legacy of community service:

- SWCHC is proud to provide services where and when they are needed most in our community
- Leading the way in chronic disease management, lung health and child and youth programming
- Community governed
- Wide range of programs and services enriches the lives of people living in our neighbourhood from birth to end of life
- Excellent community reputation for 43 years
- Strong proven financial management
- Accredited health service and baby-friendly organization
- Strong public backing and community support for the Rosemount Branch in Hintonburg
- Support the change you want to see in and for the neighbourhood



How can I be a part of this exciting project? Become a donor!

Platinum Level Donor: \$10,000 +

- Highest level of recognition on the donor wall
- Personalized piece of recognition for their contribution
- Special recognition in our annual report
- Special invitation and mention at SWCHC AGM
- Signed letter of thanks from Board Chair and Executive Director

Gold Level Donor: \$5,000 to \$9,999

- Prominent level of recognition on the donor wall
- Personalized piece of recognition for their contribution
- Special Recognition in our annual report
- Special invitation/mention at SWCHC AGM
- Signed letter of thanks from our Board Chair

Silver Level Donor: \$2,500 to \$4,999

- Appropriate level of recognition on the donor wall
- Special mention in the annual report
- Signed letter of thanks from the Executive Director

Bronze Level Donor: \$1,000 to \$2,499

- Recognition on the donor wall
- Mention in the SWCHC annual report
- Signed letter of thanks from the Executive Director

Three easy ways to donate:

1. Cash and cheques payable to SWCHC
2. VISA or MasterCard
3. Through our website at www.swchc.on.ca. Click the donate button and choose "Grow With Us"

SWCHC is a registered charity with CRA and all donations are tax deductible.

